

**ERGIC2 antibody - middle region**  
**Rabbit Polyclonal Antibody**  
**Catalog # AI10136****Specification**

---

**ERGIC2 antibody - middle region - Product Information**

Application	WB
Primary Accession	<a href="#">O96RQ1</a>
Other Accession	<a href="#">O96RQ1</a> , <a href="#">NP_057654</a> , <a href="#">NM_016570</a>
Reactivity	Human, Mouse, Rat, Rabbit, Zebrafish, Pig, Dog, Guinea Pig, Horse, Bovine
Predicted	Human, Mouse, Rat, Pig, Chicken, Dog, Guinea Pig, Bovine
Host	Rabbit
Clonality	Polyclonal
Calculated MW	42 kDa KDa

**ERGIC2 antibody - middle region - Additional Information****Gene ID** 51290**Alias Symbol** CDA14, Erv41, MGC111152, PTX1, cd002**Other Names**

Endoplasmic reticulum-Golgi intermediate compartment protein 2, ERGIC2, ERV41, PTX1

**Target/Specificity**

ERGIC2 belongs to the ERGIC family. It possible play role in transport between endoplasmic reticulum and Golgi.

**Format**

Liquid. Purified antibody supplied in 1x PBS buffer with 0.09% (w/v) sodium azide and 2% sucrose.

**Reconstitution & Storage**

Add 50 ul of distilled water. Final anti-ERGIC2 antibody concentration is 1 mg/ml in PBS buffer with 2% sucrose. For longer periods of storage, store at -20°C. Avoid repeat freeze-thaw cycles.

**Precautions**

ERGIC2 antibody - middle region is for research use only and not for use in diagnostic or therapeutic procedures.

**ERGIC2 antibody - middle region - Protein Information****Name** ERGIC2**Synonyms** ERV41, PTX1**Function**

Possible role in transport between endoplasmic reticulum and Golgi.

**Cellular Location**

Endoplasmic reticulum-Golgi intermediate compartment membrane; Multi-pass membrane protein. Golgi apparatus, cis-Golgi network membrane; Multi-pass membrane protein. Endoplasmic reticulum membrane; Multi-pass membrane protein. Cytoplasm. Nucleus Note=Cycles between the endoplasmic reticulum and the Golgi. According to a report, localizes to the nucleus (PubMed:11445006). Another report shows a partial localization in the nucleus (PubMed:17980171)

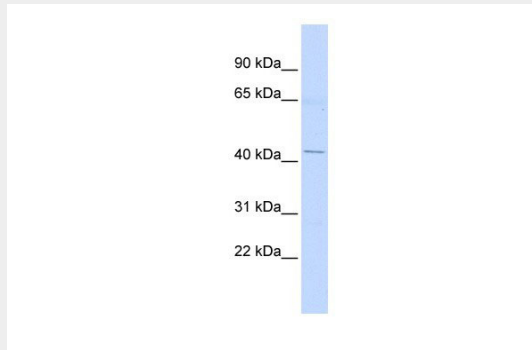
**Tissue Location**

Ubiquitously expressed.

**ERGIC2 antibody - middle region - Protocols**

Provided below are standard protocols that you may find useful for product applications.

- [Western Blot](#)
- [Blocking Peptides](#)
- [Dot Blot](#)
- [Immunohistochemistry](#)
- [Immunofluorescence](#)
- [Immunoprecipitation](#)
- [Flow Cytometry](#)
- [Cell Culture](#)

**ERGIC2 antibody - middle region - Images**

ERGIC2 antibody - middle region (AI10136) in Human Lung cells using Western Blot  
WB Suggested Anti-ERGIC2 Antibody Titration: 0.2-1 µg/ml  
ELISA Titer: 1:62500  
Positive Control: Human Lung

**ERGIC2 antibody - middle region - Background**

This is a rabbit polyclonal antibody against ERGIC2. It was validated on Western Blot using a cell lysate as a positive control. Abgent strives to provide antibodies covering each member of a whole protein family of your interest. We also use our best efforts to provide you antibodies recognize various epitopes of a target protein. For availability of antibody needed for your experiment, please inquire (sales@abgent.com).